

YUÈ RESIDENCE

越舍



Professionally managed in partnership with  
Contented Living

YUÈ RESIDENCE - YAU MA TEI

Design-led student living in the heart of Kowloon, HK

坐落九龙核心，打造设计驱动的学生公寓

# MORE THAN A PLACE TO STAY

超越一所公寓，延伸理想生活

Yuè Residence is a purpose-built student accommodation project for students who want more than just a room. In the heart of Kowloon, it brings together thoughtful design, all-inclusive convenience, professional management and a vibrant student-only community in one of Hong Kong's most connected neighbourhoods.

As Hong Kong's first government-approved student accommodation project under the "Hostel in the City" scheme, Yuè offers a more dependable and better curated alternative to fragmented off-campus rentals. It is designed to feel effortless from day one and rewarding over time.

越舍是一个专为学生而设的品牌式学生公寓，为那些追求不止一间房间的学生而打造。坐落于九龙核心地段，项目将考究设计、全包式便利、专业管理与充满活力的学生专属社群融为一体，带来更完整、更从容的香港居住体验。作为香港首个获政府“城中学舍计划”批准的学生住宿品牌，越舍为零散而参差不齐的校外租住选择，提供了一个更可靠、更有系统、也更有品质感的替代方案。从入住第一天起，它就被设计成轻松顺畅，并在之后的每一天都持续提升你的生活体验。



# WHY YUÈ RESIDENCE

## 越舍 - 定义理想留港生活

At Yuè, every detail is built around a more seamless student living experience

在越舍，我们围绕更顺畅的学生生活体验，打造每一处细节



Reception Area

接待处

### **Connected Address**

Steps from Jordan MTR and minutes from West Kowloon Station. Your campus, the city's best neighbourhoods, and all of Hong Kong are effortlessly within reach.

### **All-Inclusive Living**

Rent includes utilities, Wi-Fi, housekeeping, and security. No hidden costs, no complicated bills—just simple, stress-free living from day one.

### **Shared Amenities**

Thoughtfully designed communal spaces foster genuine connections. From the Yuè Café to the Sky Garden, every shared area invites you to study, socialise, and belong.

### **Student-Only Community**

Live among fellow students in a vibrant, supportive environment. Yuè Residence is exclusively for students—creating a community that understands your lifestyle and ambitions.

### **Professionally Managed**

A professional management team ensures every aspect of your residence runs smoothly, so you can focus on what matters most.

### **Peace of Mind**

24/7 security, dedicated on-site management, and responsive support give you and your family a peace of mind throughout your stay.

### **城心地段**

步行即可到达佐敦港铁站，西九龙站也近在咫尺。无论是校园、城市中最精彩的生活圈，还是香港各区，都能轻松抵达。

### **全包生活**

租金已包含水电、Wi-Fi、保洁及安保服务。没有隐藏费用，也没有繁琐账单—从入住第一天起，即可享受简单、省心的生活。

### **共享设施**

精心设计的共享空间促进真实连结。从越舍咖啡店到空中花园，每一处公共区域都欢迎你学习、交流，并找到归属感。

### **纯生社区**

与志同道合的学生同住，在充满活力与支持氛围的环境中生活。越舍专为学生而设，打造一个真正理解你生活方式与目标的社区。

### **专业管理**

专业管理团队确保住所的每一个环节都顺畅运作，让你能够专注于最重要的事——你的学业与生活体验。

### **安心无忧**

24小时安保、驻场管理团队与及时支援服务，为你和家人在整个入住期间带来全面安心的居住体验。



Reception Area

接待处



# OUR NEIGHBOURHOOD

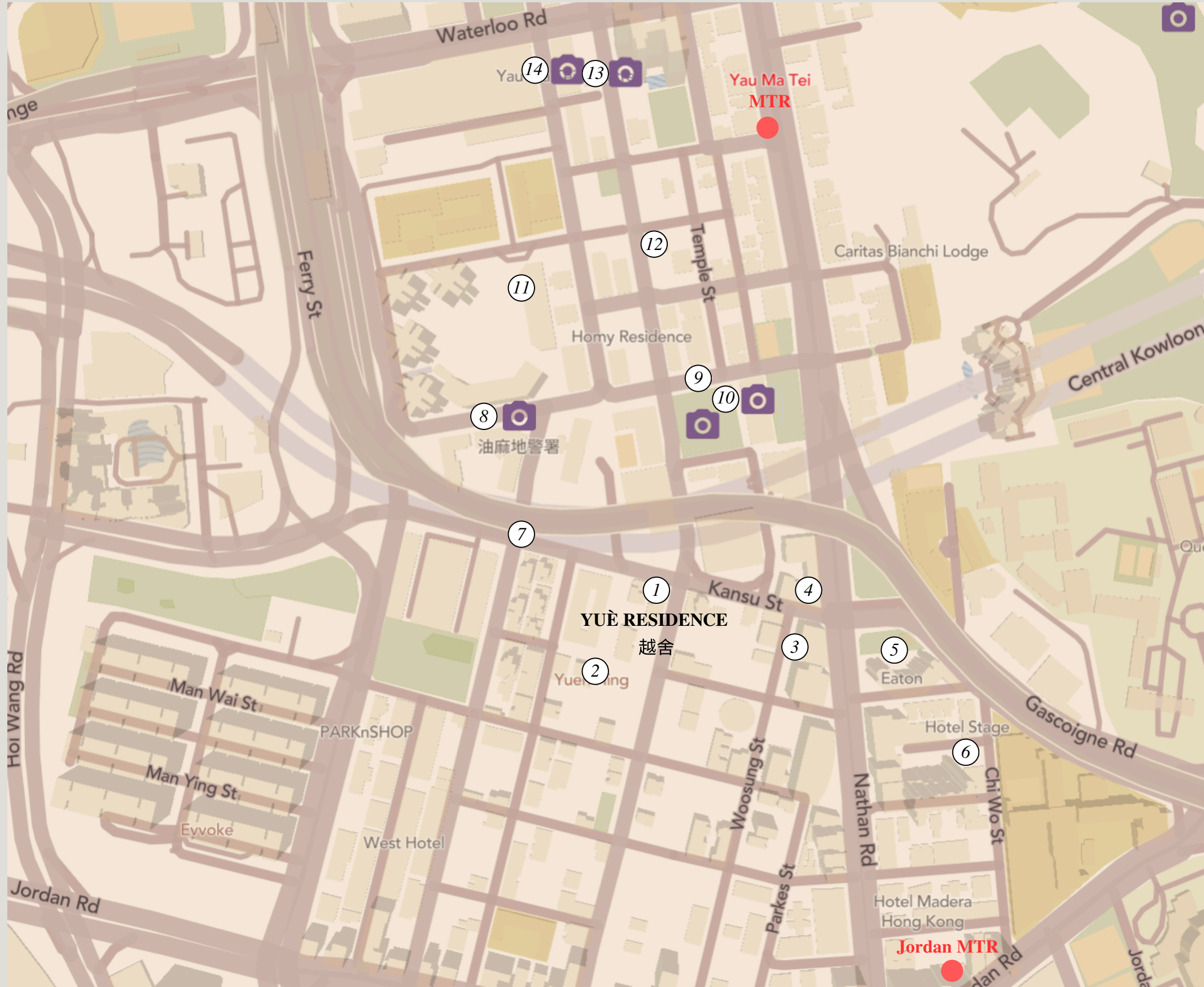
## 周边生活



Step outside and discover the vibrant pulse of old Kowloon. From Temple Street Night Market's legendary atmosphere to local supermarkets, banks, and convenience stores just moments away. Catch a film at the cinema, find quiet in the library, or unwind in the nearby park. This is a neighbourhood rich with character, where authentic dining and local shopping become part of your daily rhythm.

走出门外，便能感受旧九龙鲜活而独特的城市脉动。从充满传奇色彩的庙街夜市，到近在咫尺的超市、银行与便利店，生活所需一应俱全。无论是到电影院看场电影、在图书馆享受片刻宁静，还是到附近公园放松身心，这里都是一个充满社区个性的街区，让地道美食与本地购物自然融入你的日常生活。





# YAU MA TEI

## 油麻地

In Yau Ma Tei, Yuè puts students close to Kowloon's transport, dining, retail and culture, with Jordan and Yau Ma Tei MTR stations around 7 minutes away, Austin around 9 minutes away, West Kowloon Station around 12 minutes away, and major universities including PolyU, CityU, HKBU and HKMU reachable in around 4–10 minutes via MTR.

坐落于油麻地中心，近享九龙便捷交通、地道美食与零售购物配套。步行约7分钟达佐敦或油麻地地铁站。约4-10分钟地铁车程即可覆盖香港理工大学、城市大学、浸会大学及都会大学。

- |                                   |                                    |
|-----------------------------------|------------------------------------|
| 1. YUÈ RESIDENCE 越舍               | 8. Yau Ma Tei Police Station 油麻地警署 |
| 2. Reclamation Street Stall 新填地摊档 | 9. Mido Cafe 美都餐室                  |
| 3. Hidden Coffee & Roaster 隐啡     | 10. Tin Hau Temple 天后庙             |
| 4. Bad Coffee & Liquor Club       | 11. Kubrick                        |
| 5. Eaton Hotel 香港逸东酒店             | 12. Mom's Not Home Cafe 妈不在家       |
| 6. Tai Ping Koon Restaurant 太平馆餐厅 | 13. Red Brick Building 红砖屋         |
| 7. Jade Market 玉器市场               | 14. Yau Ma Tei Theatre 油麻地戏院       |



# SPACES TO LIVE WELL

## 为美好生活而设的空间

Yuè's shared spaces are designed to support the full rhythm of student life — focus, rest, movement, social connection and the small rituals that make a place feel like home.

From morning coffee to late-night study sessions, each amenity is designed to be useful, welcoming and part of a more considered living experience.

越舍的共享空间围绕学生生活的完整节奏而设计，兼顾专注学习、休憩放松、日常运动、社交互动，以及那些让居所更有归属感的生活细节。

从清晨的一杯咖啡，到深夜的学习时光，每一项配套都以实用、舒适与温度为出发点，营造更周到、更贴心的居住体验。



Outdoor Terrace  
户外露台



Yuè Café





*Fitness & Wellness Studio*

健身及养生空间



Yuè Café

# MORE THAN THE ESSENTIALS

## 非一般的配套

### *Yuè Café*

A warm social space to grab a coffee, meet neighbours, or simply unwind.

### *Study Space*

A calm, comfortable setting designed for focused study and group work.

### *Yuè Café*

温暖舒适的社交空间，适合喝杯咖啡、结识邻里，或放松片刻。

### *学习空间*

宁静舒适的环境，适合专注学习与小组协作。

### *Communal Kitchen*

A fully equipped kitchen for cooking, sharing meals, and connecting with others.

### *24/7 Gym*

A modern gym opens around the clock, so you can work out whenever it suits you.

### *共享厨房*

设备齐全的厨房空间，方便下厨、共享美食，并与其他人交流联系。

### *24/7 健身室*

现代化健身空间全天开放，让你随时按照自己的节奏运动。

### *Outdoor Terrace*

A peaceful outdoor retreat with open views across Kowloon.

### *More to Discover*

Additional amenities include parcel lockers, high-speed Wi-Fi and regular community events.

### *景观露台*

可俯瞰九龙景致的宁静户外空间，让你轻松放松身心。

### *更多惊喜*

其他配套包括包裹储物柜、公共区域高速 Wi-Fi，以及定期举办的社区活动。



*Fitness & Wellness Studio*  
健身及养生空间



*Outdoor Terrace*  
户外露台



# MOVE IN WITH EASE

## 轻松入住

Yuè is designed to make moving to Hong Kong easier. Rooms come furnished, and utilities, Wi-Fi, cleaning and security are already built into the living experience, removing much of the friction of setting up a home independently.

This makes Yuè especially suited to students who value simplicity, structure and a professionally managed environment from the moment they arrive.

越舍旨在让来到香港生活这件事变得更轻松。房间配备基本家具，水电、Wi-Fi、清洁及安保服务已纳入整体居住体验之中，大幅减少独立安家时的繁琐与不确定性。

因此，越舍特别适合重视效率、秩序感，以及希望从抵港第一天起就拥有专业管理居住环境的学生。



Waiting Lounge  
等候区

# SPACES FOR DIFFERENT WAYS OF LIVING

## 多元户型 — 适配你的生活方式

Yuè offers a curated collection of room types designed around different budgets, privacy preferences, and ways of living. From more communal shared-floor living to quieter apartment-style arrangements, each option is designed to balance comfort, practicality, and a sense of belonging.

越舍提供多种精装户型，以适配你的预算与生活方式。无论你偏好更开放的共享生活氛围，还是更安静的公寓式居住体验，每一种选择都在舒适、实用与归属感一步到位。



Two ways to live at Yuè:

- Social Living* — offer a more connected residential experience, with shared living and kitchen space and a mix of room types suited to students who enjoy a more social day-to-day environment.
- Private Living* — offer a quieter and more exclusive setup, with fewer rooms per residence and a calmer shared environment.

在越舍的两种生活方式:

- 共享社交生活 — 开放式布局，共享客厅及厨房，多元房型组合，适合热爱社交的你。
- 私享公寓生活 — 提供更静谧、更私密的专属居住格局，单户房间数量更少，共享环境更安静雅致。



Private Living  
私享公寓生活



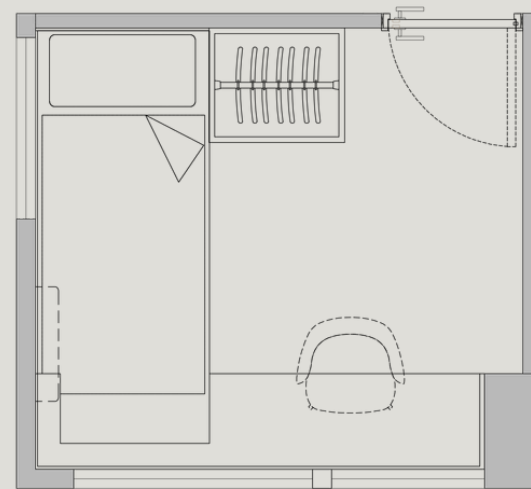
Social Living  
共享社交生活



# SIGNATURE SINGLE

## 经典单人房

62-80 sqft | HK\$9,000 - HK\$10,000 per month



A spacious private room designed for focus and comfort —  
Furnished with a bed, desk, chair, wardrobe, shelving, air-conditioning, curtains, and lighting. Large windows bring in abundant natural light, creating an inspiring space to study, relax, and recharge.

专为独立高效生活打造的精致单人房，床、书桌、衣柜、空调全配置。房间采光充足，功能一应俱全。

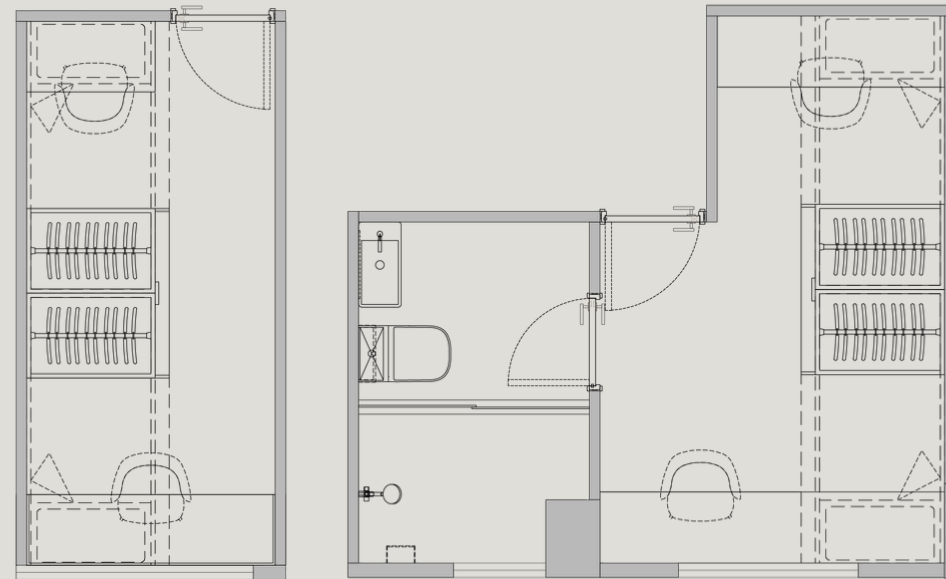




# TWIN ROOM / TWIN ENSUITE

## 双人间 / 双人套间

75 - 136 sqft | HK\$7,500 - HK\$8,500 per month



A shared / ensuite room designed for connection and comfort. Two custom bunk beds, dedicated study spaces, and smart storage make it easy to live, learn, and unwind together—all in a bright, thoughtfully designed space that balances privacy with community.

一间兼顾连结感与舒适度的共享套房，为双人居住而精心打造。订制双层床、独立学习空间与充足收纳巧妙结合，让你们能够在明亮且设计周到的环境中，一同生活、学习与放松，在私密与社区氛围之间取得恰到好处的平衡。



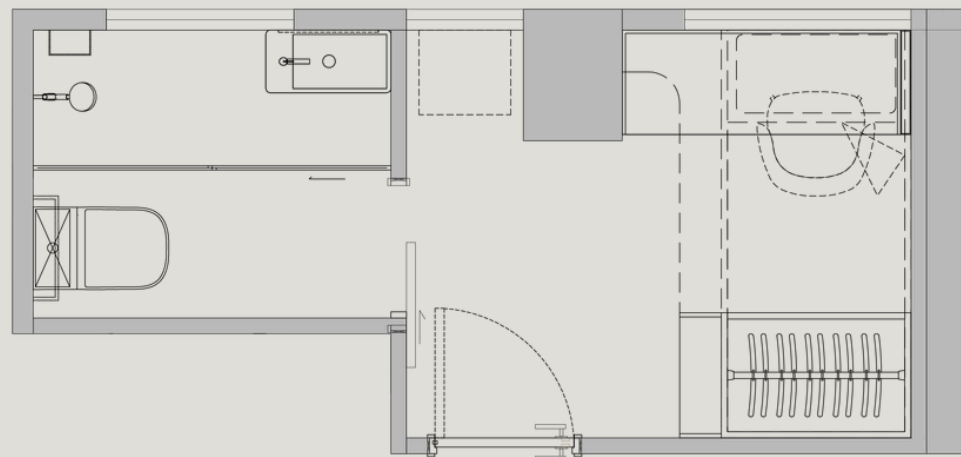


*Twin Room*  
双人间

# STUDIO ENSUITE

## 独立卫浴单人间

74 - 128 sqft | HK\$10,000 - HK\$12,000 per month



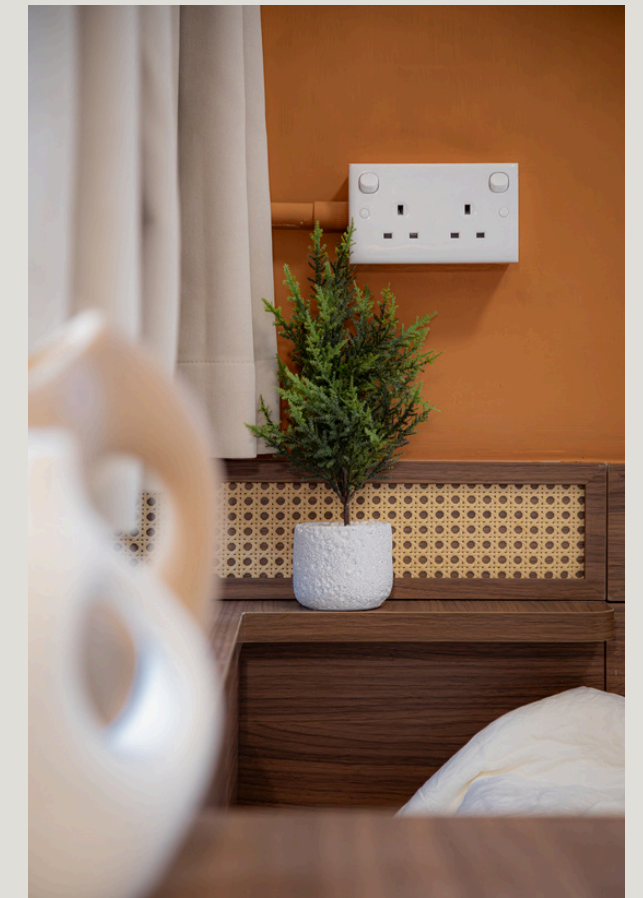
Smart, self-contained living with your own ensuite. Enjoy a custom single or elevated single bed, private bathroom, study desk, and built-in storage in a bright, well-designed space—ideal for students who value privacy, function, and convenience.

独立套房格局，配备专属卫浴，精致实用一步到位。采光通透、设计考究，配有定制单人床及高架单人床、独立卫浴、书桌与嵌入式收纳，专为注重私密、功能与便捷的学生打造。





*Studio Ensuite*  
独立卫浴单人间





# FIND YOUR PLACE IN THE CITY

在城市里找到属于你的位置

Live closer to the city in a residence designed around comfort, convenience, and connection.

Enquire now for room availability, intake periods, and viewing appointments.

Website: [yueresidence.com](http://yueresidence.com)

Email: [info@yueresidence.com](mailto:info@yueresidence.com)

住得更靠近城市，也住进一个围绕舒适、便利与连结而打造的学生居所。

欢迎查询房型供应、入住档期及预约参观。

*This brochure is for reference only. All renderings, plans, photographs, and descriptions are for illustrative purposes only and may be subject to change without notice. Actual layouts, finishes, furnishings, facilities, services, and specifications may vary. Please refer to formal leasing documents for full details.*

本宣传册仅供参考。所有效果图、平面图、照片及文字说明仅供示意用途，并可能在不作另行通知的情况下更改。实际布局、饰面、家具、设施、服务及规格可能有所不同，详情请以正式租赁文件为准。